

SEPTEMBER 2022 NEWSLETTER



ADVANCE
ANTI-SLIP SURFACES P/L

30 years

***Welcome to the September
issue of the Advance Anti-Slip
Surfaces newsletter***



Advance Anti-Slip Surfaces is an industry leader in non-slip products, we offer non-slip solutions that are ideal for floors, walkways, ramps, stairs, landings, platforms and ladders.

Our antislip products are used in the Petrochemical and Smelting Industry at many of the worlds Steelworks and Petrochemical refineries as a way to keep workers safe and to prevent serious injuries in a 24/7 production environment.

We understand the severity of a slip, stumble, trip, tumble, falter or fall incident and how it can lead to reduced work output, increased medical expenses, and lower productivity.

The non-slip products manufactured by Advance Anti-Slip are designed to resist slippage that could occur due to debris on the walkway floors, water accumulation and other hazards on high use foot traffic areas in the workplace. We have the nonslip solutions for your ladders, stair, landings, ramps, walkaways, floors and other pedestrian access surfaces.

Our anti-slip products are designed to stand up to the tough conditions found in smelting and chemical refineries, providing exceptional performance in any environment and meeting international guidelines for quality and safety.

You can rely on Advance Anti-Slip Surfaces to provide you with a non-slip solution that works. Our antislip products are trusted and respected globally by maintenance and operation managers, WH&S supervisors and others who are responsible for the safety of their workers. Our cost-effective non-slip products keep them safe, reduce stress and lower operating costs.

We prove our commitment to the Petrochemical and Smelting Industries by only using the highest quality materials in all the non-slip products that we make. This allows us to stand behind the antislip products and services we offer, and we know that you will be glad you chose Advance Anti-Slip for your nonslip solutions.

For more information or to discuss your requirements, please [contact us](#) today.

Our new Company Profile and Product Booklet is now available for your review.

Go to: <https://www.yumpu.com/en/document/view/67077656/advance-anti-slip-surfaces-company-profile-and-product-booklet-2022>

Let's prevent slips trips and falls on pedestrian walkways!
Take care and stay safe over the coming months.

CONVEYOR CHANNEL CLEAT SPECIFICATIONS ON NEXT PAGE...

Conveyor Channel Cleats

PRODUCT SPOTLIGHT

Advance Anti-Slip Surfaces manufacture a concise range of Class One, ready to install, metal backed antislip Conveyor Channel Cleats with a durable non-slip surface designed to provide firm footing on any type of conveyor ramp or walkway, even with a sharp rising incline.

Conveyor Channel Cleats come in a standard profile of 10mm high by 50mm in depth and a width from 450mm to 1200mm long, that are intended to suit most pedestrian access areas.

PRODUCT FEATURES

- Provides secure footing on wet & oily surfaces
- Robust, durable, reliable
- Available in many colour options.
- Pre-Drilled for simple installation.
- Australian Standard 4586:2013 compliant.
- Backed by Advance Anti-Slip's extensive warranty.
- High impact resistance.
- Excellent chemical & UV resistance.
- Long effective life.
- Easy to clean.

Foundations

GL = Galvabond® 1.2mm

AL1.6 = 5052 Aluminium 1.6mm

SS1.2 = 316 Stainless Steel 1.2mm

Grades of Coarseness

Ind = Industrial 24

HD = Heavy Duty 20

OS = Offshore 16

Colours

SY = Safety Yellow

BK = Black

BR = Brown

GR = Green

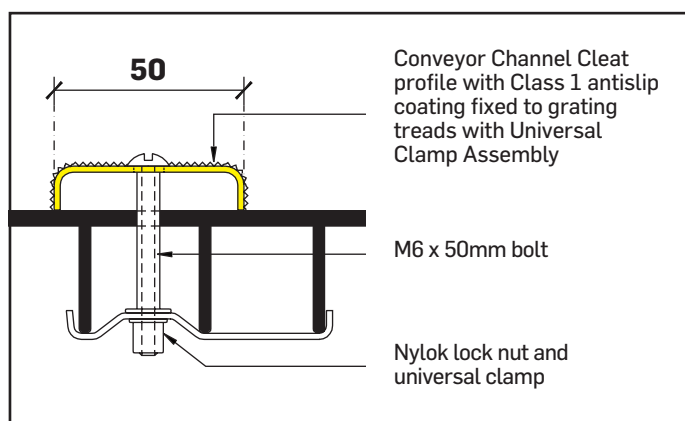
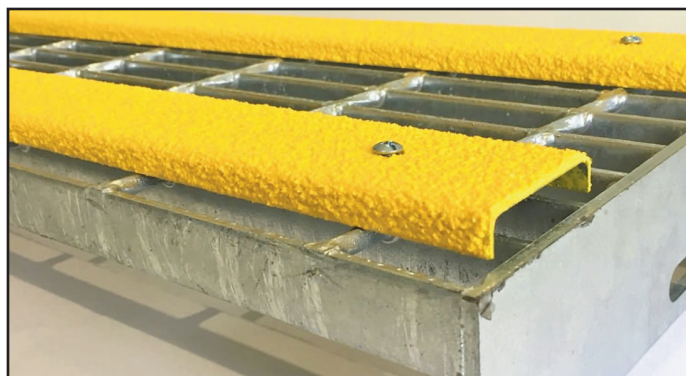
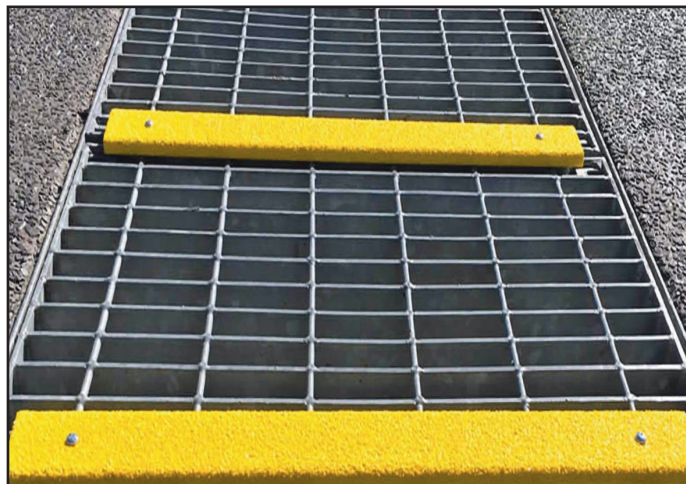
GY = Grey

BL = Blue

RD = Red

WH = White

Oth = Other



*Stair, step and landing safety is vital for every pedestrian access area.
Advance Anti-Slip has non-slip elements to suit every situation.*



ADVANCE ANTI-SLIP SURFACES Pty. Ltd.

6A Aristoc Road, Glen Waverley 3150, Victoria, Australia

P: +61 3 9560 4488 F: +61 3 9562 0449 E: sales@advanceantislip.com

www.advanceantislip.com